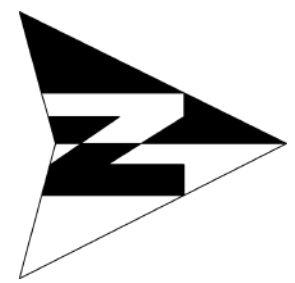


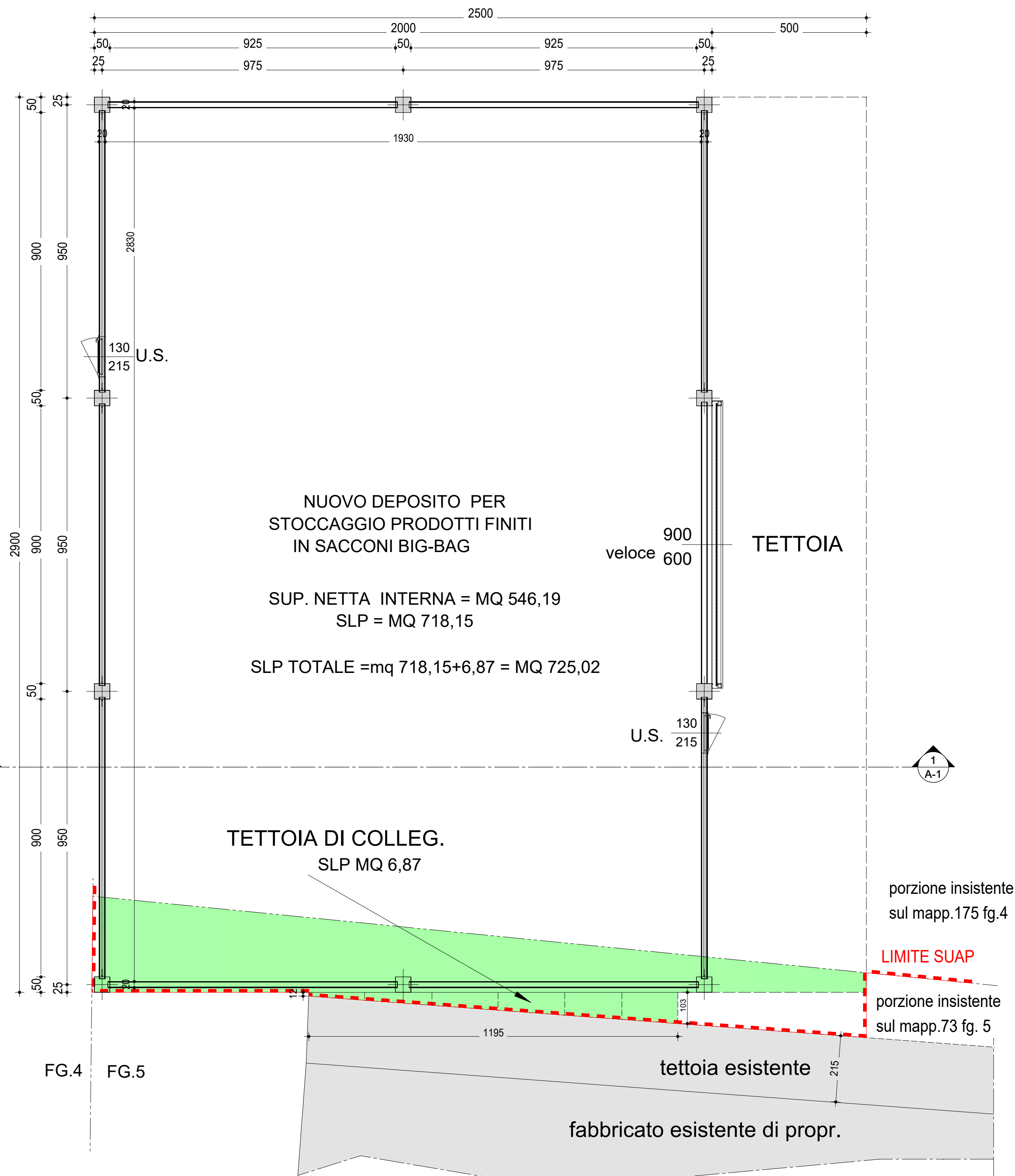
A wide-angle photograph showing the exterior of the industrial building. The building has a long, low profile with a corrugated metal roof and large windows. A loading dock area with a ramp is visible on the left side. The foreground is a grassy field, and the sky is clear and blue. A label in the top right corner reads "VISTA -12-".



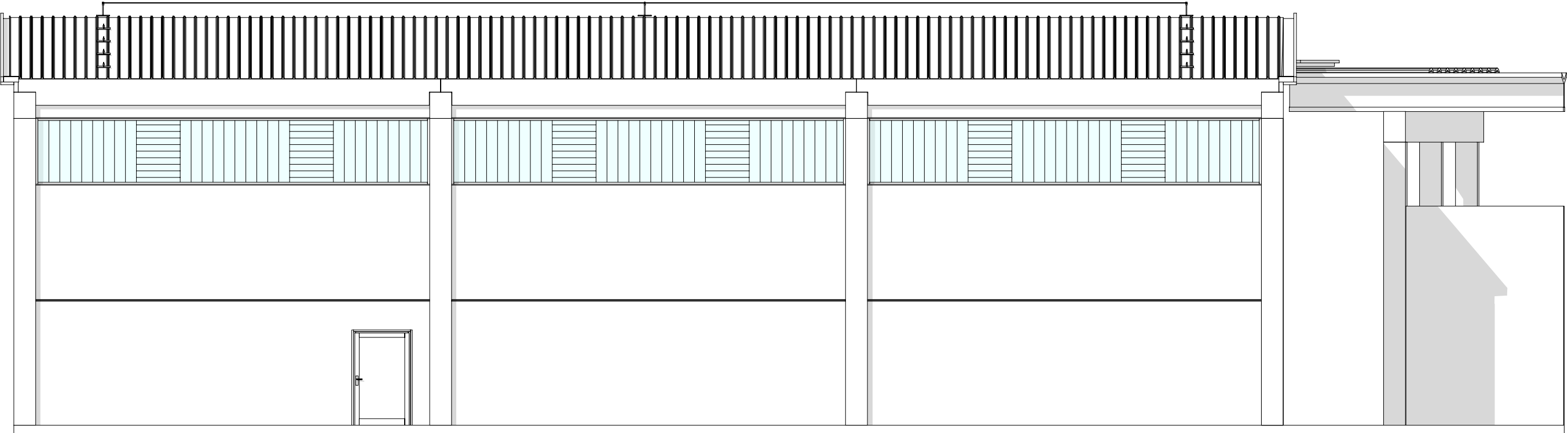
ZONA D'INTERVENTO CORPO -C-



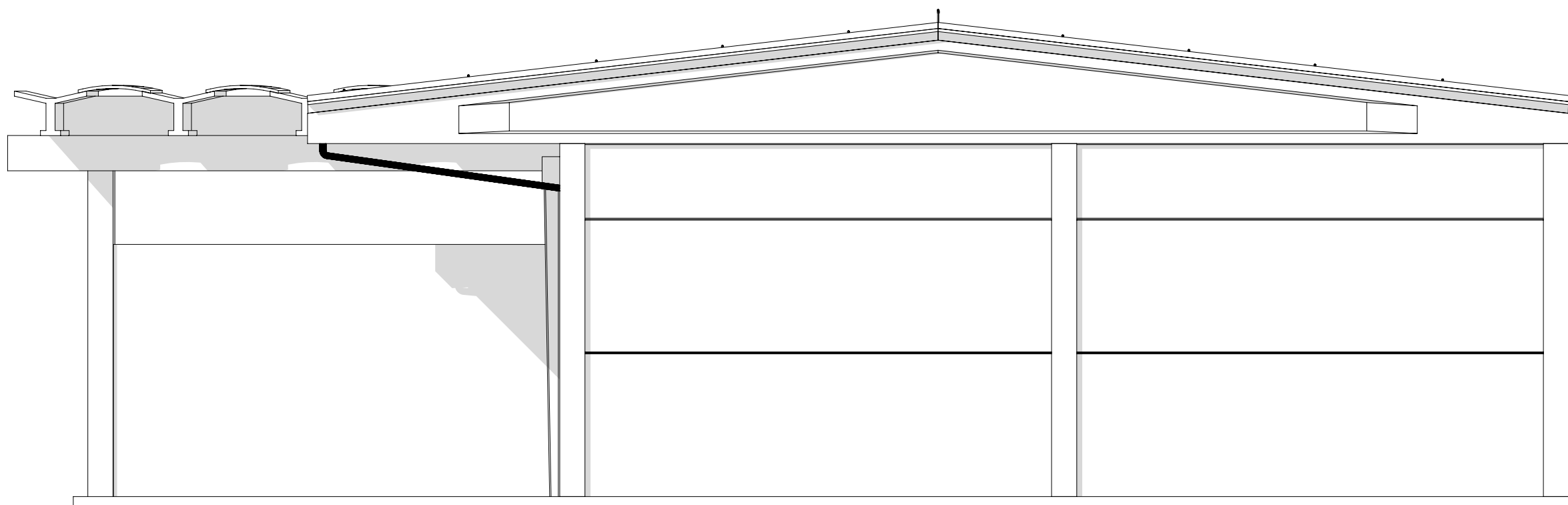
PIANTA



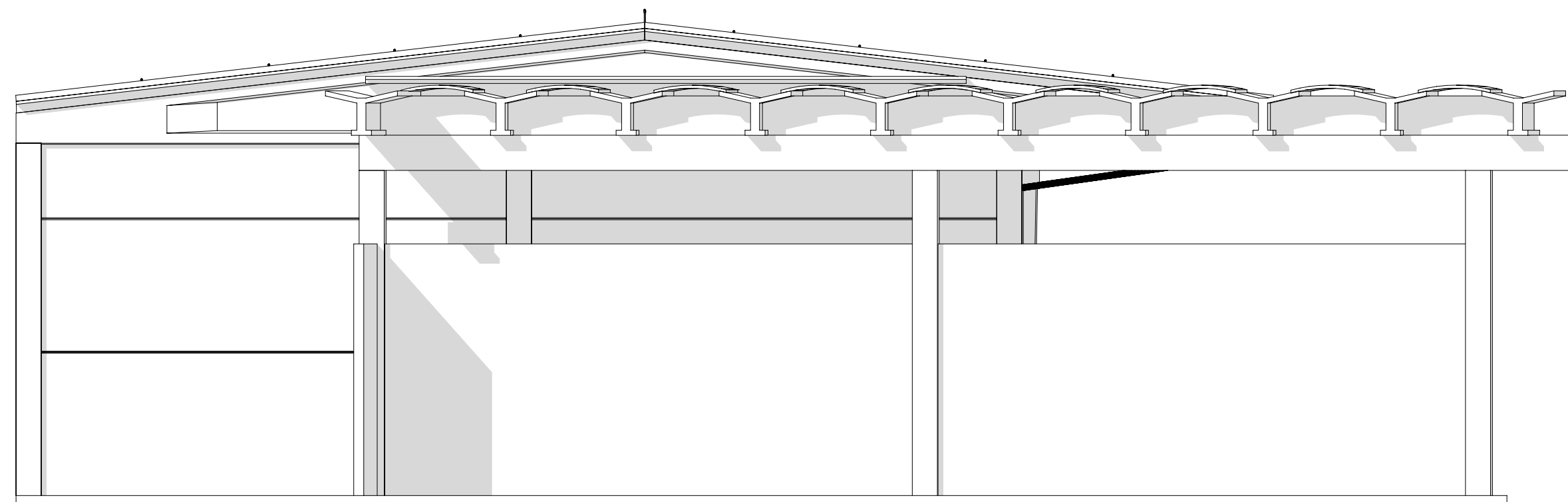
## PROSPETTO NORD



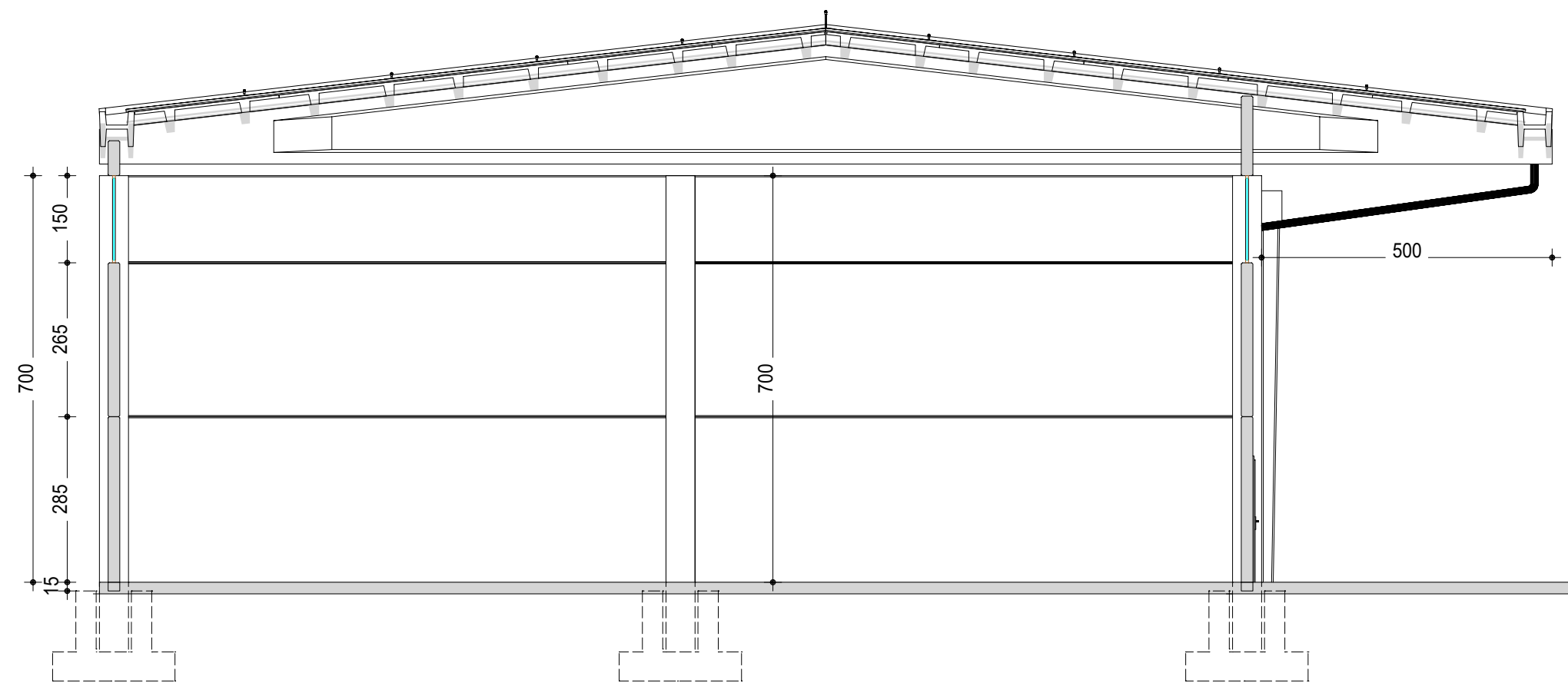
## PROSPETTO SUD



PROSPETTO EST



## PROSPETTO OVEST

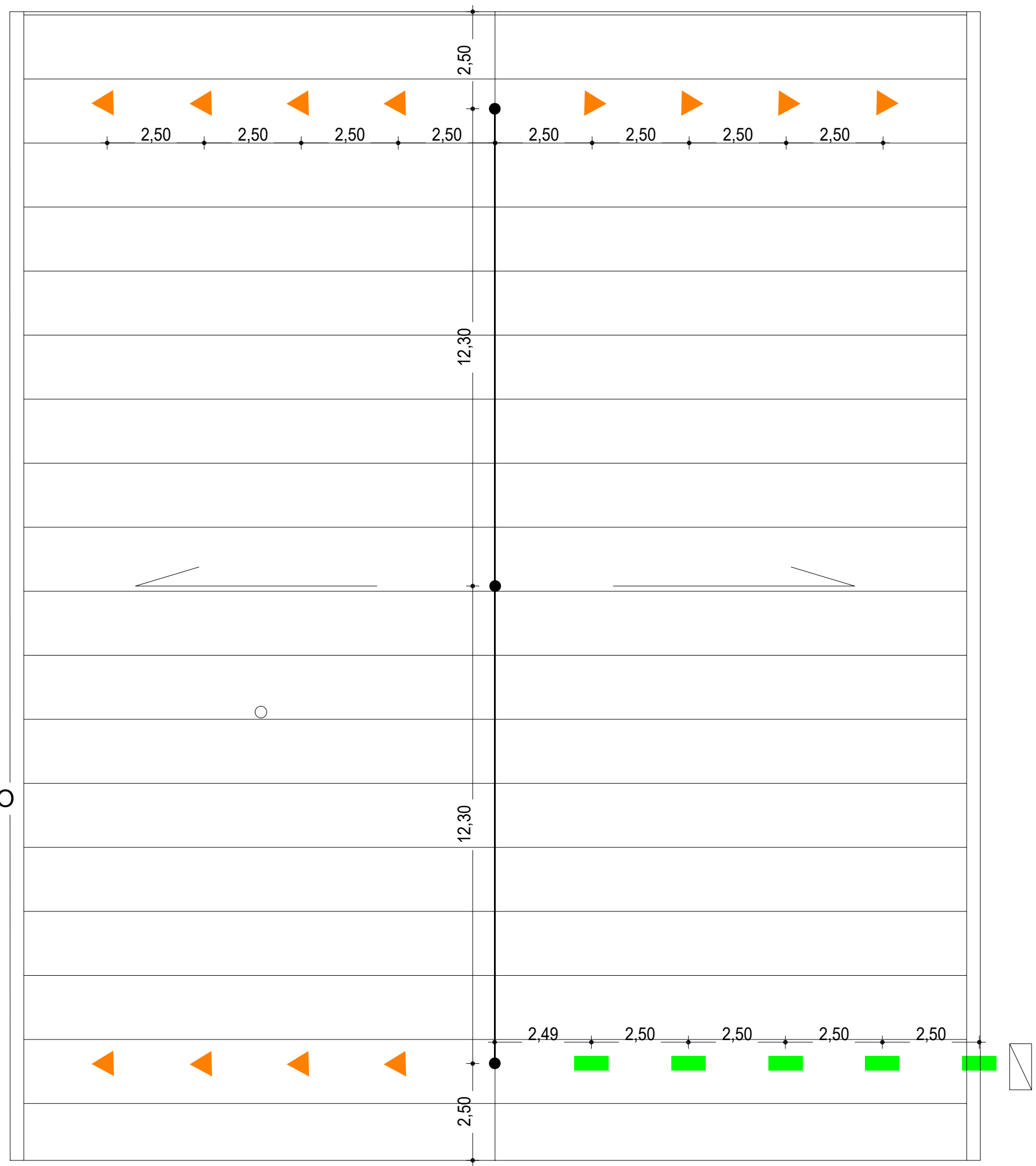






SEZIONE A-A



VISTA PROSPETTICA N-E

PIANTA COPERTURA DISPOSITIVI ANTICADUTA scala 1:100



- |   |                          |
|---|--------------------------|
|  | PUNTO DI ACCESSO ESTERNO |
|  | DISP. ANCORAGG. TIPO C   |
|  | DISP. ANCORAGG. TIPO A   |
|  | ANTIPENDOLO TIPO A       |